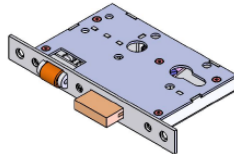




**HANDLE HOUSE**  
& THINGS



### **Roller Lock Fitting Instructions**

A – Choose the height of the lock, we suggest 900mm from the bottom of the door to the centre of the euro hole

B – Using the template supplied mark the face plate centrally on the door edge

C – Select a drill bit to the required opening

D – Drill overlapping holes down the centre line slightly deeper than the lock body

E – Clean out any excess wood with a chisel

F – Place the lock into the opening and adjust if necessary

G – With the lock in position mark around the face plate

H – Chisel out the marked area

I – Drill holes for euro cylinder

J – Fit cylinder and escutcheons

K – Fit the striker to the jamb

Please note this is a guideline only on fitting this lock and we recommend a qualified installer install the lock.