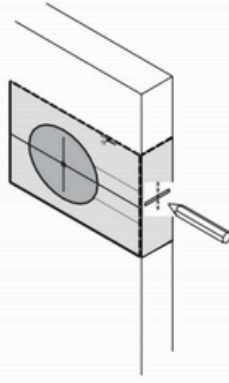


This lever will fit 32mm to 45mm door thickness

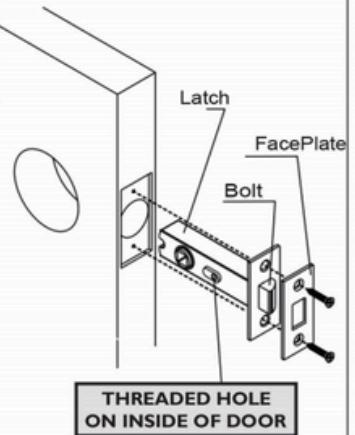
Step 1. Door Preparation

- ✓ Fold the supplied template and position template on door edge.
- ✓ Mark centre of 51 mm hole on both sides of door.
- ✓ Mark horizontal centre-line of 25mm hole using template, then mark centre of door thickness.
- ✓ Drill 51 mm hole through door face, from both sides to avoid splintering.
- ✓ Drill 25mm hole into the edge of the door, central to the door thickness. Ensure the hole is drilled squarely.



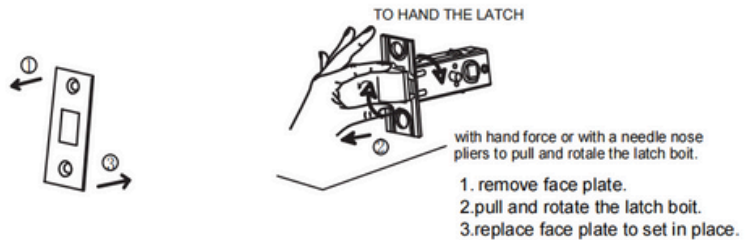
Step 2. Latch Installation

- ✓ Insert latch into hole and mark around the face plate.
- ✓ Chisel rectangular section to a recess of 4mm or until latch face is flush with door edge.
- ✓ Insert latch into hole, ensuring the threaded hole is on the inside of the door.
- ✓ Also ensure the curve on the latchbolt is positioned towards the direction of door closure. Bolt can be pulled out of latch and rotated 180degrees if required to re-orientate.
- ✓ Position faceplate over bolt
- ✓ Pre-drill and fasten latch and faceplate to door with wood screws provided (#6 x19mm)



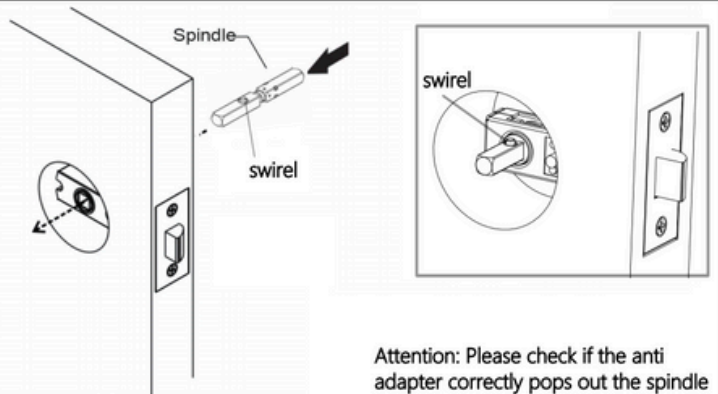
Step 3. PRIVACY LATCHBOLT HANDING INSTRUCTIONS

- ✓ All Privacy Latchbolts are supplied handed to accommodate inward opening doors. If you have an outward opening door, use the following instructions to band the latchbolt correctly.



Step 4. Spindle Installation

- ✓ Install Spindle into square opening in latch.
- ✓ To ensure the correct installation of the door lock spindle, please check that the anti adapter is correctly ejected from the spindle



DOOR TEMPLATE

Fold on dotted line and fit on door edge

Mark $\varnothing 25\text{mm}$ hole at centre of door edge.

60mm BACKSET

$\varnothing 52\text{mm}$
not to scale

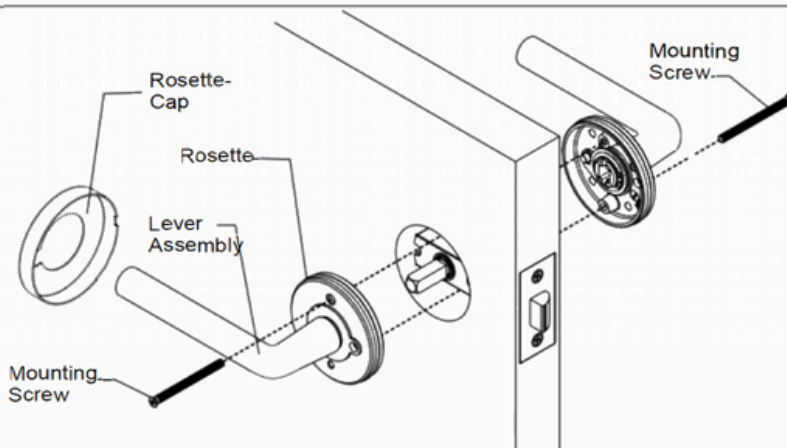
Step 5. Screw Selection

Y Measure door thickness and select correct mounting screws as per table :

DOOR THICKNESS	MOUNTING SCREW
32 - 38mm	M4 x 25mm LONG
38 - 45mm	M4 x 35mm LONG

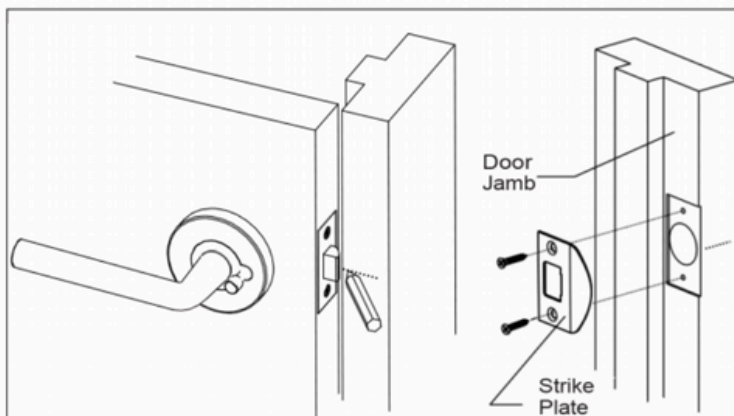
Step 6. Lever Installation

- Y Determine which side of the door each lever assembly will need to be installed to allow both levers to move in a downward direction once installed. (Holes on bottom of levers)
- Y Remove both Rosette-Caps.
- Y Place one lever assembly onto the spindle. Place the other lever assembly onto the other end of the spindle.
- Y Fasten both lever assemblies together with mounting screws selected in STEP 4. Install one screw from either side through the countersunk holes. Tighten both screws.



Step 7. Strike Plate Installation

- Y Gently close the door until latchbolt rests on door jamb. Mark centre of latchbolt on door jamb, this mark can be used to position strike plate.
- Y Mark and drill 25mm hole inside the jamb to a depth of 12mm
- Y Position the strike plate and mark around. Chisel recess until strike plate sits flush with jamb face.
- Y Fasten the 2 wood screw (#6x19mm) supplied.



DOOR TEMPLATE

Fold on dotted line and fit on door edge

Mark $\varnothing 25\text{mm}$ hole at centre of door edge.

60mm BACKSET

$\varnothing 52\text{ mm}$

not to scale

